



VERTICAL EXPRESS

Phone: 866.448.3789

Fax: 901.261.1807

www.verticalxpress.com

Power Units

Premium Hydraulic Performance

Our custom built, job specific power units enhance virtually any hydraulic installation. The superior motor and cast designs and our exclusive I-Series® valves deliver power units with precise operation, outstanding performance, and overall dependability.

Tested for Accuracy

Hydraulic elevators only perform as well as the valves in the power unit. The pistons in our I-2 and I-3 Series valves are machined to provide smoother, quieter, and more consistent operations, and every valve that leaves our U.S. manufacturing facility is tested to ensure that it meets specific pressure and load requirements.

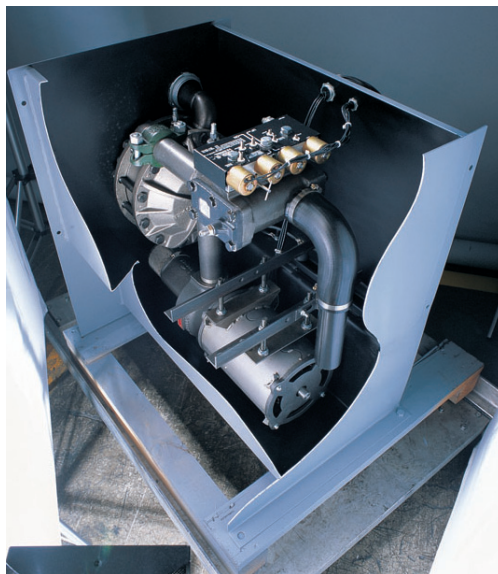
A custom-built, welded manifold ties the valve to the power unit. To ensure proper function, these manifolds are tested using two times the working pressure of the jack.

Power Units Created Precisely For You

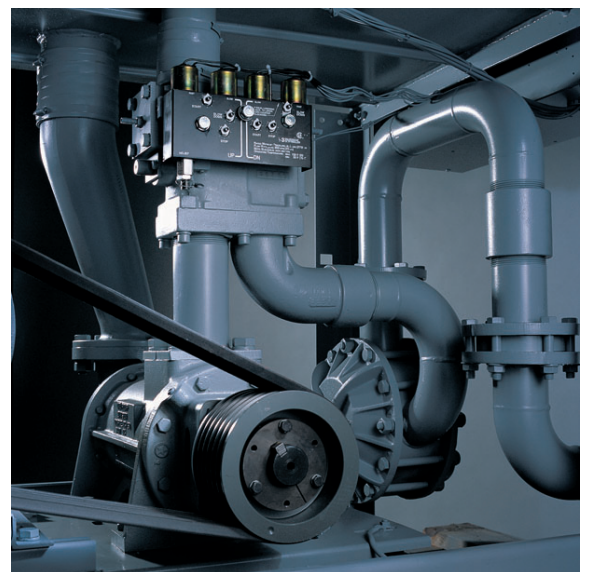
Power units are available in two versions, dry and submersible. A submersible power unit takes up less space by submersing the motor and pump in the tank which reduces noise levels created during regular elevator operation. This compact design is capable of pumping up to 260 gallons per minute, and is small enough to fit in almost any machine room.

A dry power unit has more power and lifting ability for larger capacities at higher speeds. The open frame design provides easy access for scheduled maintenance, and the high output pump and motor combinations are capable of pumping up to 350 gallons per minute and are available for any voltage.

Contact Your Vertical Express Representative Today!



Submersible Power Unit



Dry Power Unit

Power Units Order Form

When the form is complete, send it through one of these methods:

- fax: (866) 877-8099
- email: parts@verticalxpress.com
- phone: (866) 448-3789

Company	Job No.	Date
Job Name	PO No.	Ordered By
Phone No.		

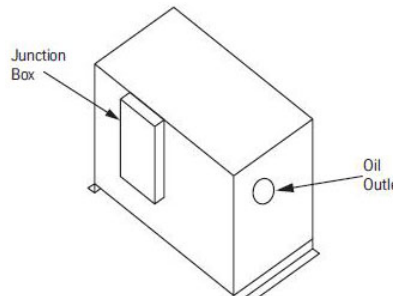
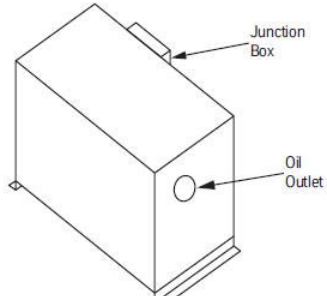
Required Information

AP Power Unit (Dry)	2" Shut-off Valve (under 215 GPM)	Qty.
EP Power Unit (Submersible)	3" Shut-off Valve (over 215 GPM)	Qty.
Viscosity Control	Isolation Coupling	Qty.
Oil Cooler	Overspeed/Rupture Valve — In-line	90°
Low Pressure Switch	Oil Line Type: Victaulic	NPT
Glass Oil Level Sight Gauge	Oil Type: Bio-degradable	Petro
Junction Box	Tank Shut-off Valve for Isolation Oil	
Car Speed	Seismic Requirements	
Capacity	Constant Lowering Speed (Maxton)	
Car Weight	Machine Room Location: Adjacent	
Existing Controller Type	Below (requires pressure switch)	
Solenoid Voltage	Overhead	
Main Line Voltage	Remote, Distance =	
Phase	Gross Load on Power Unit	
Jack Piston Diameter	Pump Size (GPM)	
Number of Jacks	Rise	
Canadian	Loading Class	
	Oil Line Size	

Existing Data

Motor HP	3 Phase
Voltage	Single Phase
Static Pressure	Amps
Relief Pressure	

Hand of Unit

Standard	Non-Standard
	

Vertical Express
 9280 Crestwyn Hills
 Memphis, TN 38125
 All illustrations and specifications are based on information in effect at time of publication approval. Vertical Express reserves the right to change specifications or design and to discontinue items without prior notice or obligation.
 © 2014 Vertical Express