



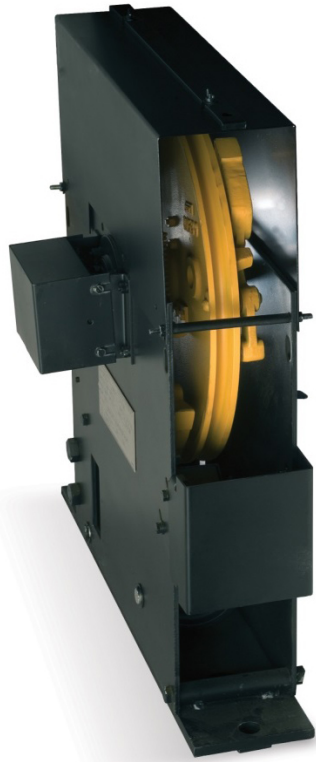
# Replacement Governors

**VERTICAL EXPRESS**

Phone: 866.448.3789

Fax: 901.261.1807

[www.verticalexpress.com](http://www.verticalexpress.com)



16-inch Governor

## Overspeed Control

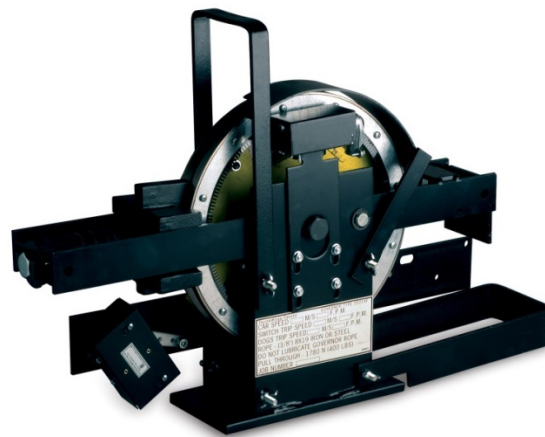
The governor is a mechanical speed control mechanism. The governor monitors the speed of the car in the down direction by using one rope. If the car travels too fast in the down direction, the governor is tripped and a set of safeties are engaged to stop the car.

During the annual safety test performed on your elevators, it may be determined that a replacement governor is needed.

Vertical Express Governors are available in 12 and 16-inch diameters to accommodate speeds ranging from 100-1400 fpm and a variety of rope sizes.

## Features

- Mounting options available for car and counterweights
- Tail weights with sheaves are available for both car and counterweights
- 12-inch governors are manufactured with live shafts to accommodate encoders
- 16-inch governors are manufactured with live shafts (upon request)



12-inch Governor

Vertical Express  
9280 Crestwyn Hills  
Memphis, TN 38125  
All illustrations and specifications are based on information in effect at time of publication approval. Vertical Express reserves the right to change specifications or design and to discontinue items without prior notice or obligation.

© 2014 Vertical Express

**Contact Your Vertical Express Representative Today!**