



**VERTICAL EXPRESS**

# VEpac

Phone: 866.448.3789  
sales@verticalxpress.com

Do you want your elevators to be reliable? Ride smoothly? Be up to code? Have the latest technology? Then it is time to modernize with Vertical Express. Our VEpac is a complete modernization package for low-rise elevators and will improve any elevator system's performance and reliability, as well as bring it into compliance with current codes.



Vertical Express  
9280 Crestwyn Hills  
Memphis, TN 38125  
[www.verticalxpress.com](http://www.verticalxpress.com)

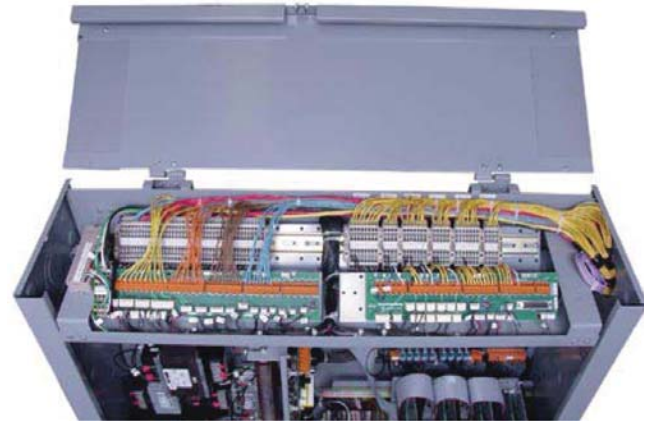
All illustrations and specifications are based on information in effect at time of publication approval. Vertical Express reserves the right to change specifications or design and to discontinue items without prior notice or obligation.

© 2015 Vertical Express

## I-CON® Controller - The Smart Choice

### Technology and Diagnostic Tools

The I-CON microprocessor based system offers better diagnostic capabilities and easier troubleshooting than other control systems. An on-board owner's service tool provides all the diagnostic equipment required for adjusting, maintaining and troubleshooting the system.



### Planning for your future.

The I-CON features flash technology, which allows future upgrades or performance-enhancing features to be added by simply installing new software instead of replacing costly components or entire systems. When you're ready for a change, the I-CON will be ready to change with you.

### Flexibility and Performance

Whether you are installing or modernizing, the smart choice is the flexible design of the I-CON control system. It is compatible with existing door operators, power units, signal fixtures, and other major components. If you are upgrading only the controller or replacing the entire elevator system, the I-CON offers an economical solution. And with improved, more efficient installation techniques, both downtime and inconvenience are minimized.

The I-CON control system will improve the performance of any brand of hydraulic elevator by increasing reliability and making smarter traffic handling decisions.

---

## Universal Door Operator



Faulty doors are the elevator industry's most frequent service call. This new technology improves door reliability and provides quick and smooth door operation.

## Fixtures - Classic. Contemporary. Practical.

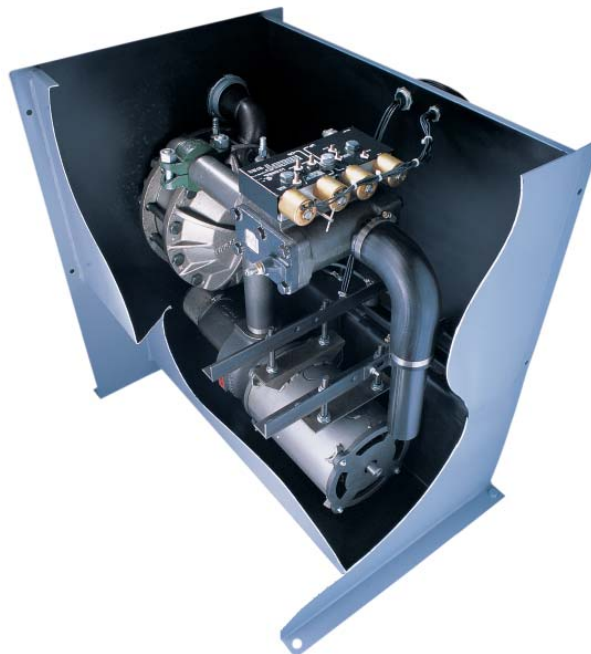
Fixtures are the most visible part of the elevator and our wide selection of fixtures enhance both appearance and functionality.

Our fixture line is in full compliance with all US and Canadian Fire Service codes and offers Braille plates with highly durable, cast tactile markings meeting the most stringent code requirements.



## Power Unit (Optional)

For elevators over 10 years old, a power unit replacement can reduce downtime, increase elevator performance, offer quieter operation, and reduced vibration.



# VEpac Overview

## Control System

- I-CON Controller
- Microprocessor-Based
- Simplex or Group Operations
- On-Board Diagnostics
- Solid State Starter
- Battery Lowering
- Tenant Security 3-1
- Front Openings
- Up to 6 Stops
- Local Code Compliance
- Limit Switches (If Required by Local Code)
- Leveling Accuracy: +/- 1/2 inch (13 mm)
- Power Supply: 200-208V, 220-240V, 460-480V, 575-600V, 50/60 Hz, AC

Speeds: Up to 200 fpm (1 m/s)

Capacity: 1200 to 5000 lbs.

Travel: Up to 60 feet (18m)

## Tape Selector

- Elevator Position Digitally Communicated to I-CON Controller
- Strong Spring Tensioning Device

## Door Operator

- UDO
- On-Board Diagnostics
- MicroLight Electronic Door Detector

## Fixtures (No. 4 Stainless Steel Finish)

- Car Operating Panel
  - Digital PI
  - ADA Compliant Hands Free Phone
  - Emergency Light
  - Fishtail Braille
  - Code Compliant Signage
- Surface Mounted Hall Fixtures with Appendix "O"
- Surface Mounted Main Floor Digital PI
- Car Riding Lantern
- Hoistway Access Fixtures

## Wiring Package

- Traveling Cable
- Hoistway Wiring

## Additional Components

- Car Top Inspection Station
- Car Top Railing
- Car Top Exit Switches

## Power Unit (Optional)

- Submersible Design
- Exclusive I-2<sup>®</sup> Control Valve
- Motor from 5 to 60 HP
- Oil Flow Silencer

