

ActiveX Source Server Setup

1. Run Internet Explorer on the PC to be ActiveX source server and type in the address [Http://localhost/adminauth. php](http://localhost/adminauth.php) (see Figure 1)

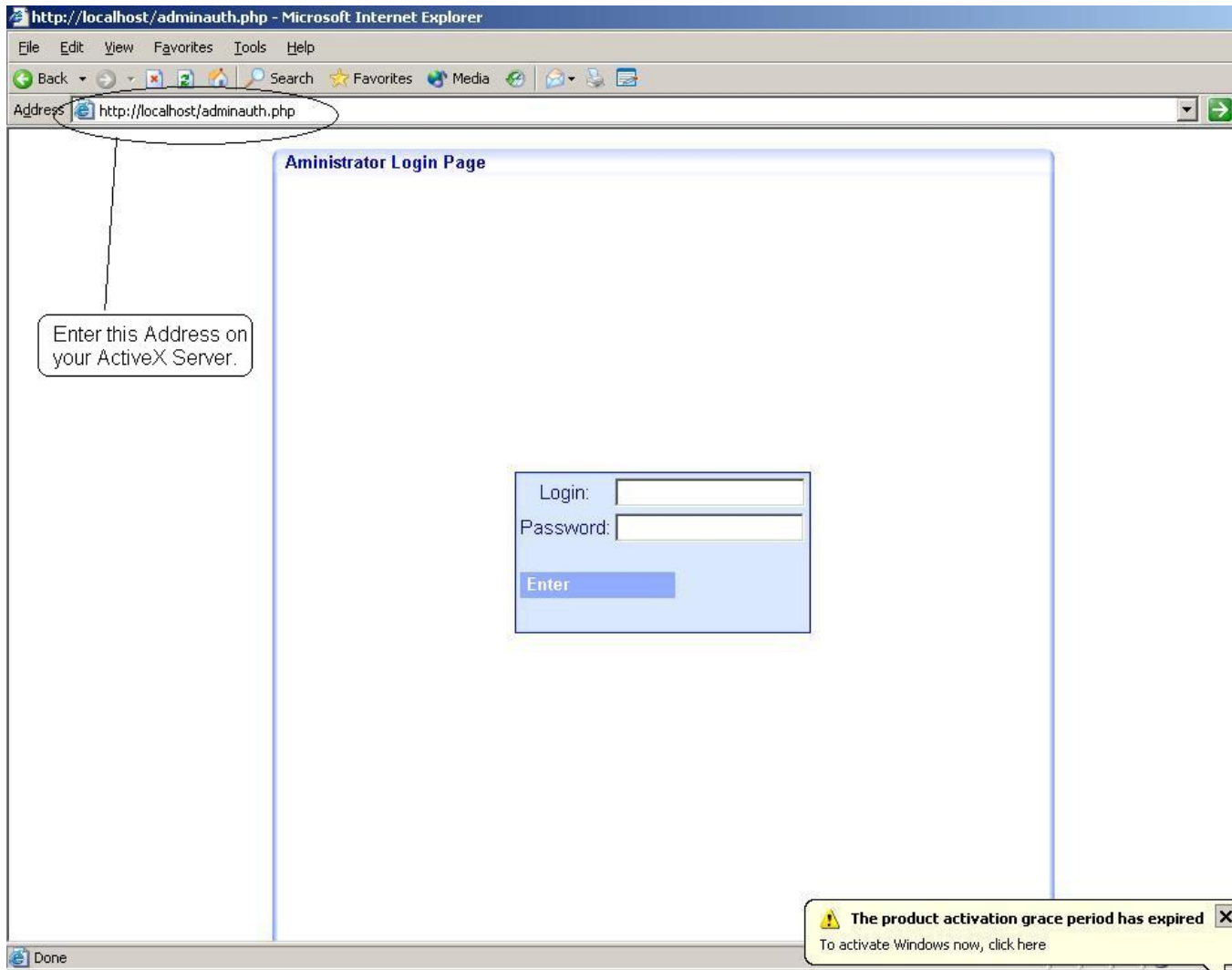


Figure 1.

2. Type in login and password. Login=m, Password=m.
3. In the main menu pick system administration submenu (see figure 2.)

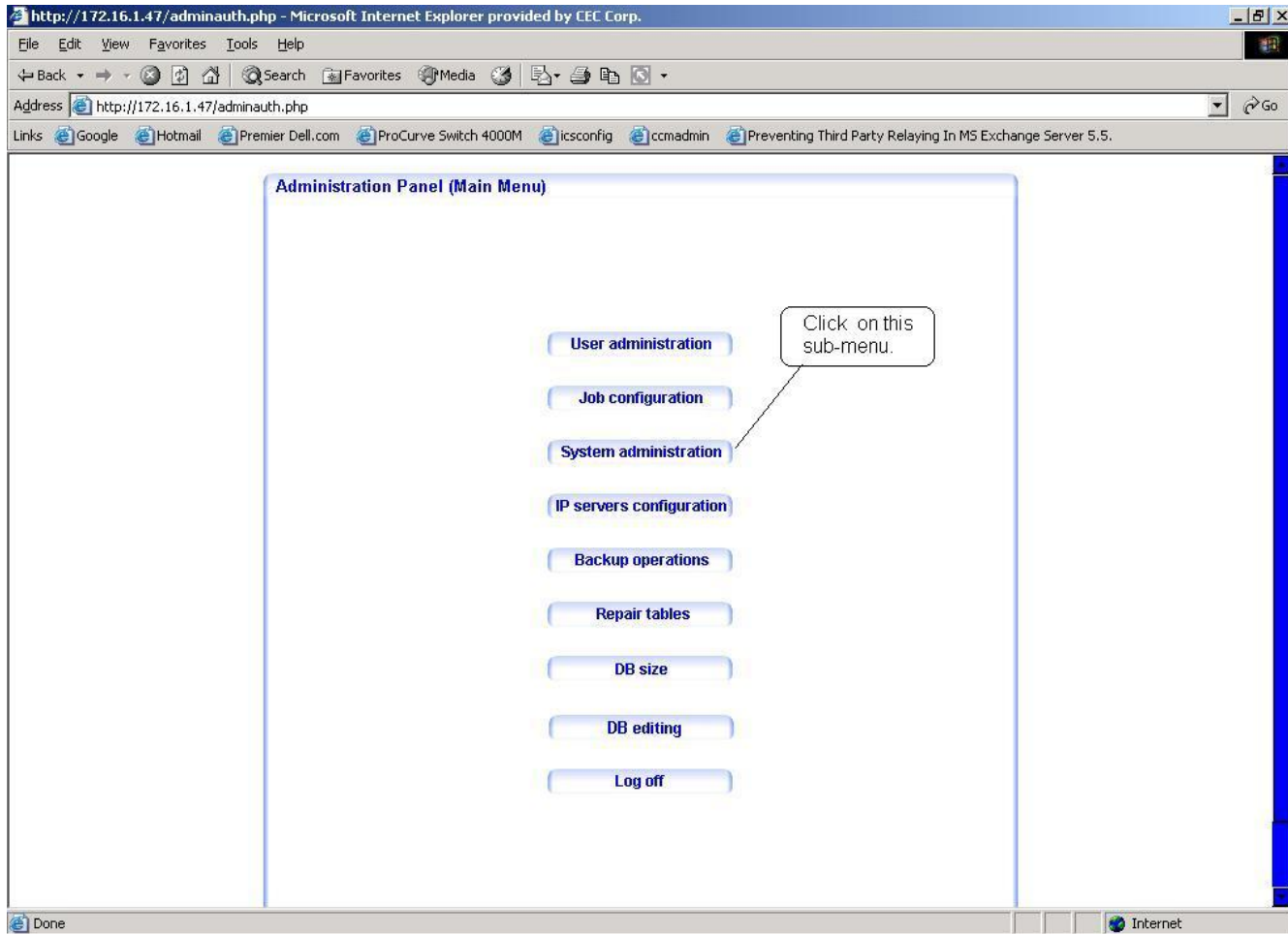


Figure 2.

4. Go to "Other Settings" section and in the setting labeled "ActiveX Source Server:" Enter the IP Address of the local PC. (see Figure 3.)
5. Click on "Save changes" then on "Back to Main Menu"
6. Done.

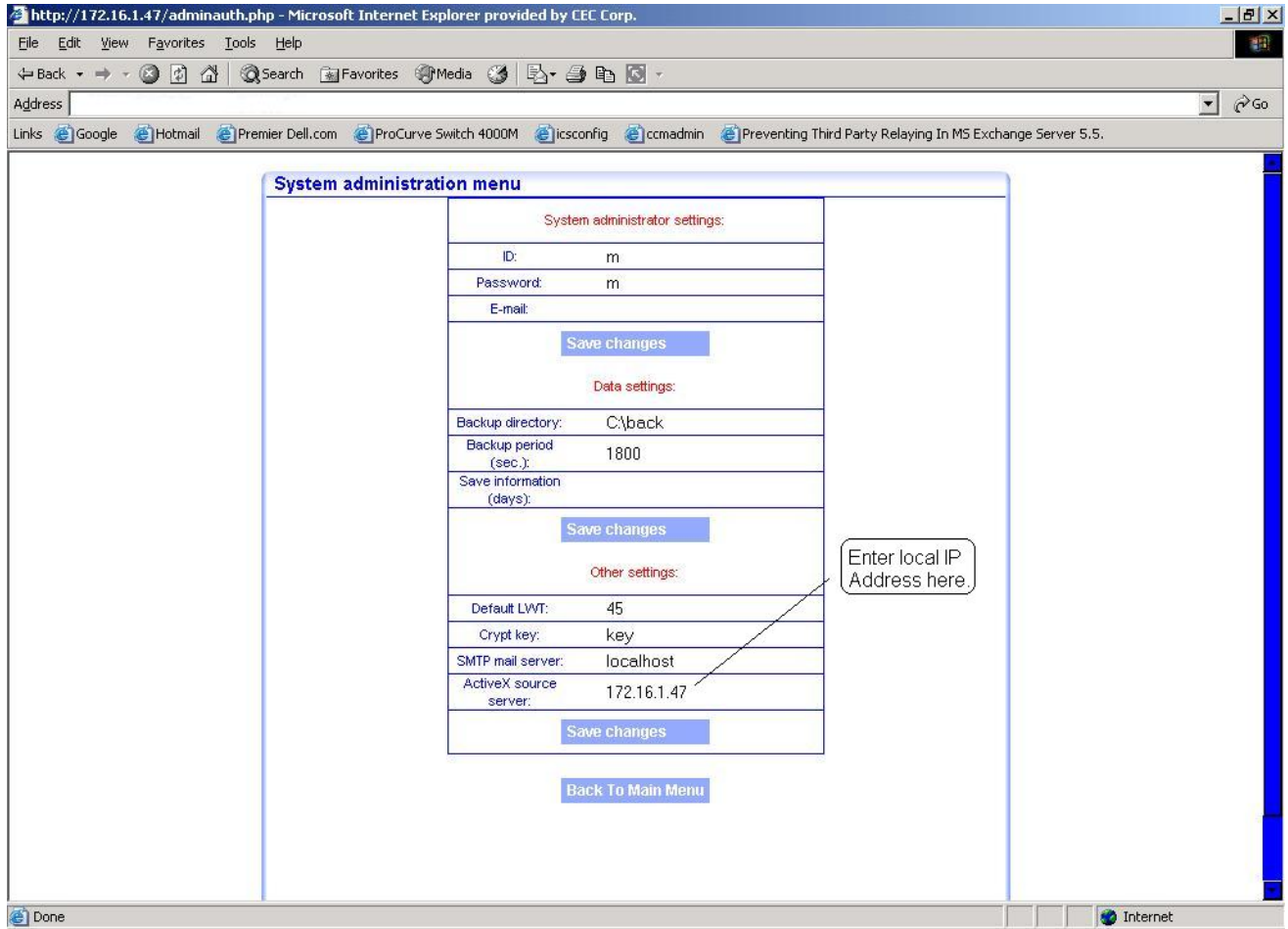


Figure 3.